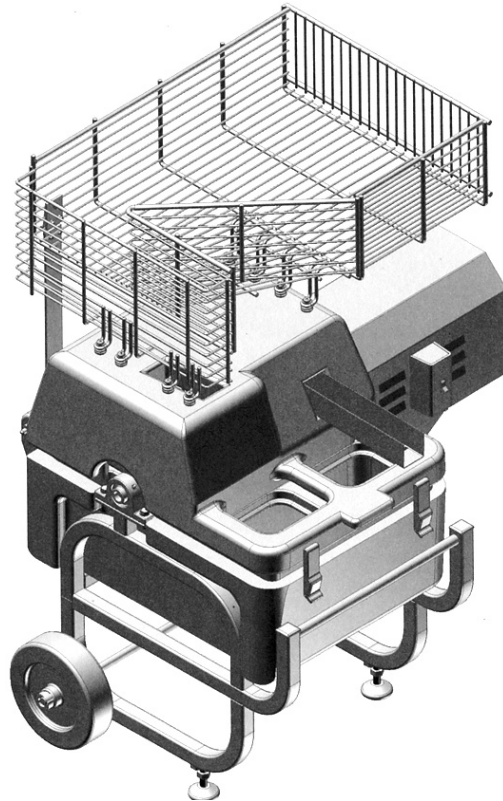


**BEDIENUNGSANLEITUNG**  
**EUROPÄISCHER**  
**SCRUB-PRO™ GOLFBALLWASCHER**



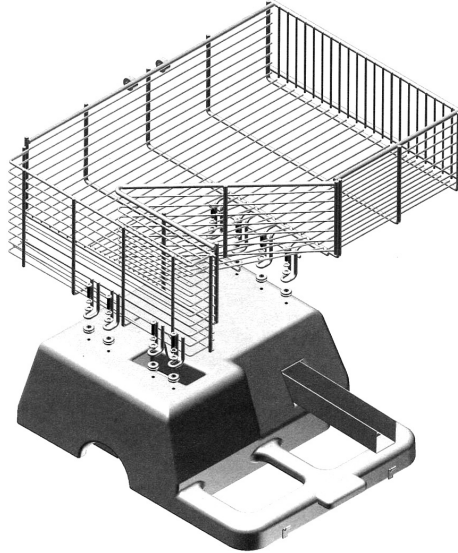
**Magnum Scrub-Pro™ Golfballwascher**

Der Magnum Scrub-Pro™ Golfballwascher besteht aus einem langlebigen Polyethylenegehäuse und aus einem pulverbeschichteten Stahlrohrrahmen. Ausgestattet mit unregelmäßig verteilten Trimmborsten für bessere Reinigung der Dimples, einem extra großen Ablauf für schnelle und einfache Reinigung sowie einem einstellbaren Fuß zum Ausrichten auf den verschiedenen Untergründen. Die Bürste lässt für längere Lebensdauer wenden und einfach entnehmen. Ballreinigungskapazität 15.000 Bälle pro Stunde. Der Tank fasst 30 Liter. Die Maschine ist 89 cm breit x 107 cm hoch x 76 cm tief und wiegt 61 Kilogramm.

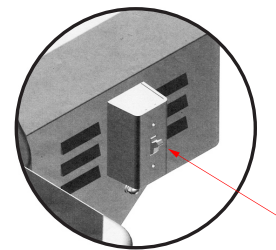


1. Inspizieren Sie die Maschinen, nachdem Sie die Transportverpackung entfernt haben. Benutzen Sie die Maschine nicht, wenn diese beschädigt

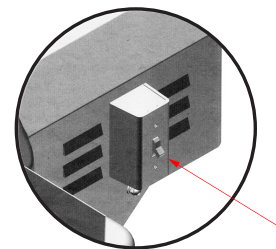
2. Befestigen Sie den Korb auf der Abdeckung wie unten angegeben:.



3. Stellen Sie die Maschine auf einem harten, ebenen Untergrund auf. **BENUTZEN SIE DIE MASCHINE NICHT, WENN DIESE IM WASSER STEHT ODER BEI REGEN.**
4. Schließen Sie die Maschine an eine geerdete Steckdose an. **VERSUCHEN SIE NICHT, DIE MASCHINE MIT EINER NICHT GEERDETEN STROMQUELLE ZU VERWENDEN.**
5. Geben Sie 240 ml (8 US Unzen) Standard Sparkleen™ Golfballreiniger in den leeren Tank. Füllen Sie den Tank mit zirka 30 Liter Wasser, warm bis heiß, (zirka 5 cm unter dem Höchststand). **VERWENDEN SIE KEINE WASCHMITTEL, HAUSHALTSREINIGER, CHEMISCHEN LÖSUNGSMITTEL ODER SÄUREN**
6. Bedienung der Maschine:
  - A. Schließen Sie die Abdeckung und befestigen Sie die Gummilaschen.
  - B. Drehen Sie den Schalter auf die Position "ON".
  - C. Legen Sie einige Bälle in den Korb, um die gute Funktion zu prüfen, bevor Sie den Korb mit Bällen füllen.



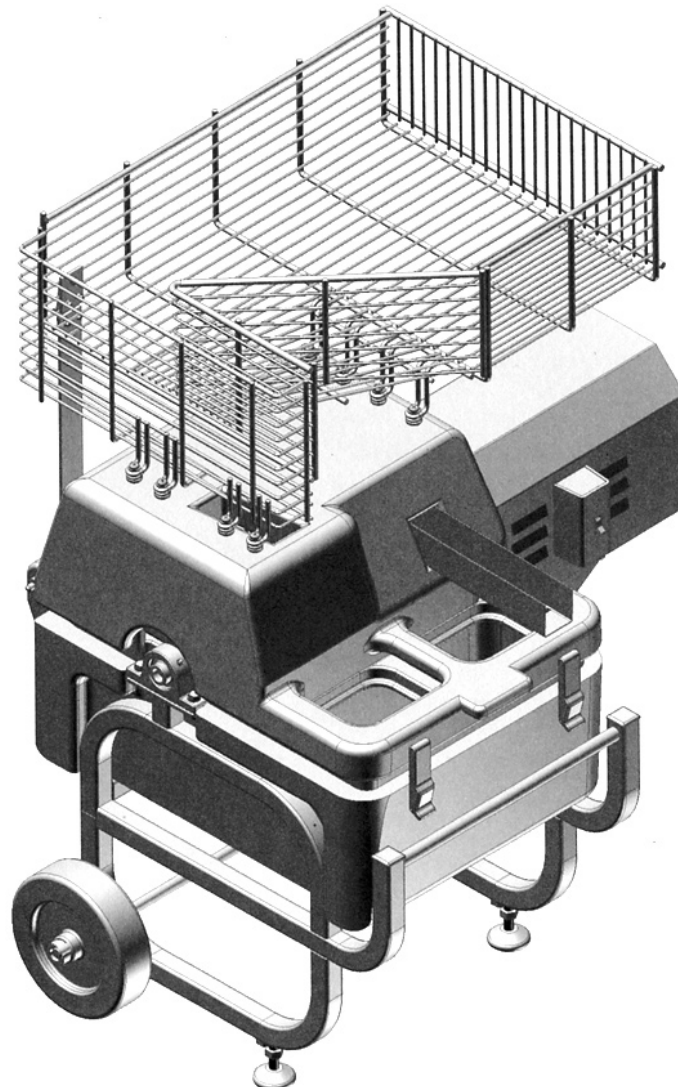
7. Wenn die Maschine blockiert, schaltet sie sich automatisch aus. Um das Hindernis zu beseitigen:
  - A. Drehen Sie den Schalter auf die Position "OFF" ziehen Sie den Stecker aus der Steckdose.
  - B. Öffnen Sie die Trommel und entfernen Sie die Bälle oder Gegenstände, die das Hindernis bilden.
  - C. Warten Sie ungefähr 5 Minuten und schließen Sie dann die Maschine wieder an den Strom an.



LÄSST SICH DIE BLOCKADE NICHT MIT DEM O.A. VERFAHREN MANUELL BEHEBEN, SCHAUEN SIE IM WARTUNGSHANDBUCH NACH DEN VERFAHREN ZUM ENTFERNEN DER TROMMEL.



**MAINTENANCE AND PARTS MANUAL FOR THE  
EUROPEAN  
SCRUB-PRO™ GOLF BALL CLEANSER**



---

**REVISED JUNE 2007**

---

**MODEL NUMBER 87000**

# MAGNUM SCRUB-PRO™ WARRANTY

Standard Golf Company warrants its products to free from defects in materials and workmanship within a period of one year from the date of purchase. Standard Golf's sole responsibility under this warranty shall be to repair, replace, or refund to its Distributor the price of the defective product or component. All such repairs, refunds and replacements are subject to such rules, terms and conditions and Standard Golf may promulgate from time to time.

## INITIAL INSPECTION

Inspect the machine immediately after removing the outer portion of the shipping crate. If it is found detached or moved from the pallet, there is possibility of damage. Inspect the machine. If any damage is discovered, immediately notify the shipping carrier and take the appropriate action.

## BASKET INSTALLATION

The MAGNUM SCRUB-PRO has been shipped from the manufacturer with the basket unassembled. Ref. to BASKET & EXIT CHUTE ASSEMBLY (page 3) for mounting directions.

## INSTALLATION AND HOOK-UP

- a) The MAGNUM SCRUB-PRO™ may be used outdoors; however it is recommended to place the machine on a hard surface and not have it set directly on the open ground.
- b) It is not necessary that the machine be perfectly level. The tub is designed to drain in the center of the tank, permitting efficient water drainage from off-level position.
- c) A drain extension can be attached to the 1" ball valve. A standing drain pipe or fixture can be connected directly.
- d) Plug machine into a standard 230V, grounded wall receptacle or UL approved extension. Be careful to keep electrical power source clear of water.

**Warning: The SCRUB-PRO is designed with a grounded safety plug. DO NOT ATTEMPT TO DEFEAT ITS PURPOSE. Use of a plug adaptor or non-ground power source can result in shock or injury.**

## INITIAL MACHINE START-UP

- 1) Soap and Water Fill
  - a. Put 240 ml of SPARKLEEN™ LIQUID DETERGENT into the empty tank.
  - b. Fill the tank approximately 5 cm from the top with warm to hot water.

**WARNING: Do not use laundry detergents, liquid cleaners, chemical solvents, or acids.**

## 2) Test Cycle

- a. Make sure the tub is closed and the rubber latches are fastened.

**WARNING: Never operate machine with lid open or the rubber latches unfastened.**

- b. With the tank properly filled, place an empty basket on the floor in front of the exit chute.
- c. Turn the machine "ON" using the ON/OFF switch (see diagram #2).
- d. Place a few balls in the hopper. Observe and make sure the balls roll and enter smoothly through the ball entry trough (the leveling feet may need to be adjusted to help the ball enter the trough). The balls should exit the machine from the ball exit chute. The machine is equipped with an overload protector. In case of blockage, the machine will automatically shut OFF to prevent serious damage. Removing the drum may be necessary. To reset, turn ON/OFF switch to "OFF" position and disconnect from the power source, clear machine of blockage, wait five minutes, reconnect the power source and then turn "ON" again.
- e. Turn the machine "OFF" using the ON/OFF switch (see diagram #3).

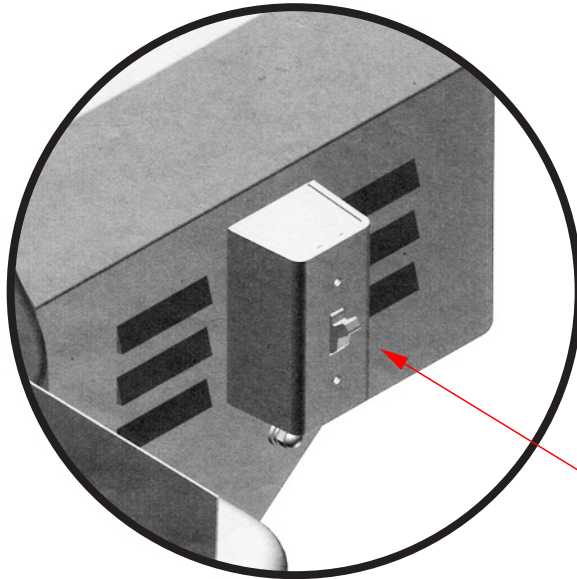


Diagram #2

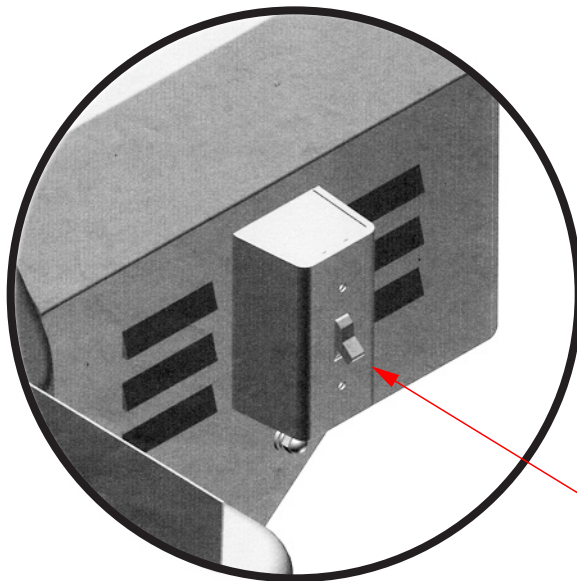


Diagram #3



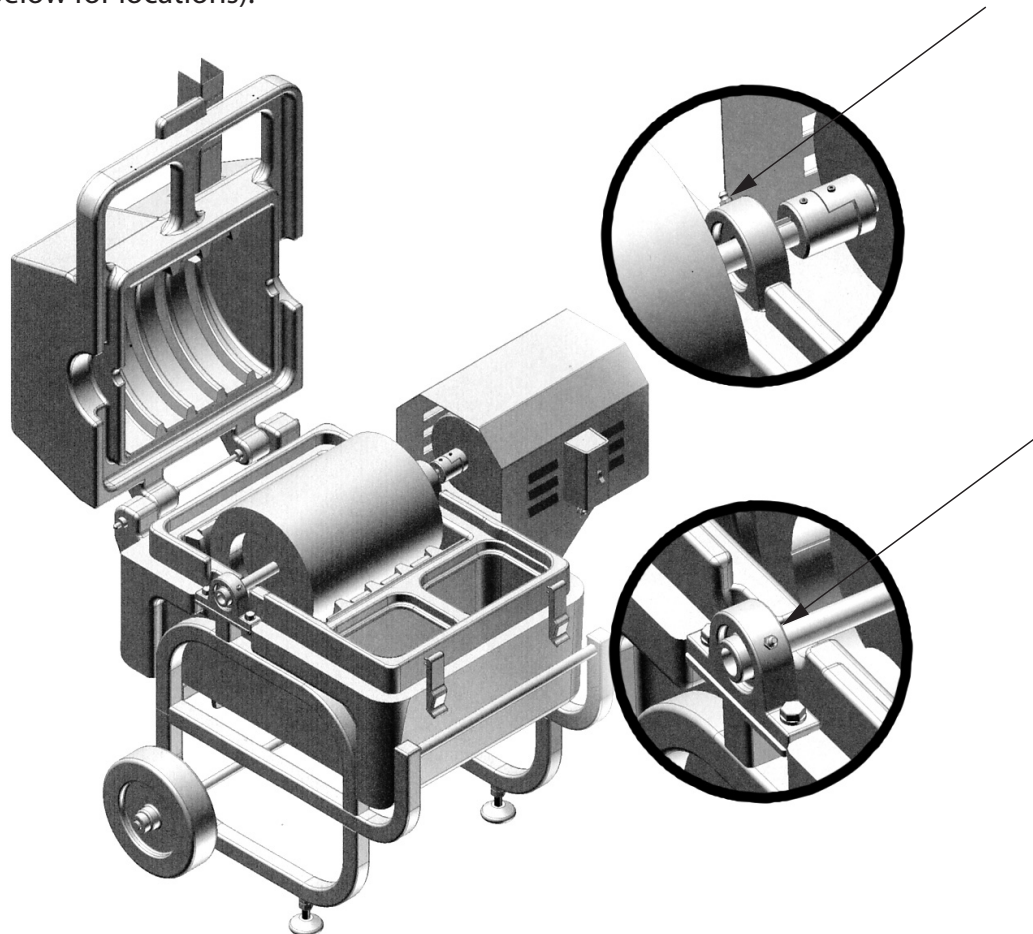
# MAINTENANCE PROCEDURES

- a. Always turn the machine off and disconnect from power source before doing any maintenance.
- b. Always use the proper soap and water solution
- c. Always turn the machine on before feeding hopper
- d. Monitor the flow of balls in the hopper for sticks, rocks, chunks of mud, golf tees, broken balls or any other debris, and remove as discovered. Foreign matter hinders the machine's cleaning ability.
- e. The SCRUB-PRO™ is designed to pass small debris through the drain slot on the bottom of the lower drum. Large objects must be removed by hand.
- f. Regularly remove the drum from washer to inspect for broken or cut balls, large debris, or other obstructions that may be lodged in the lower drum guides or drainage slot.

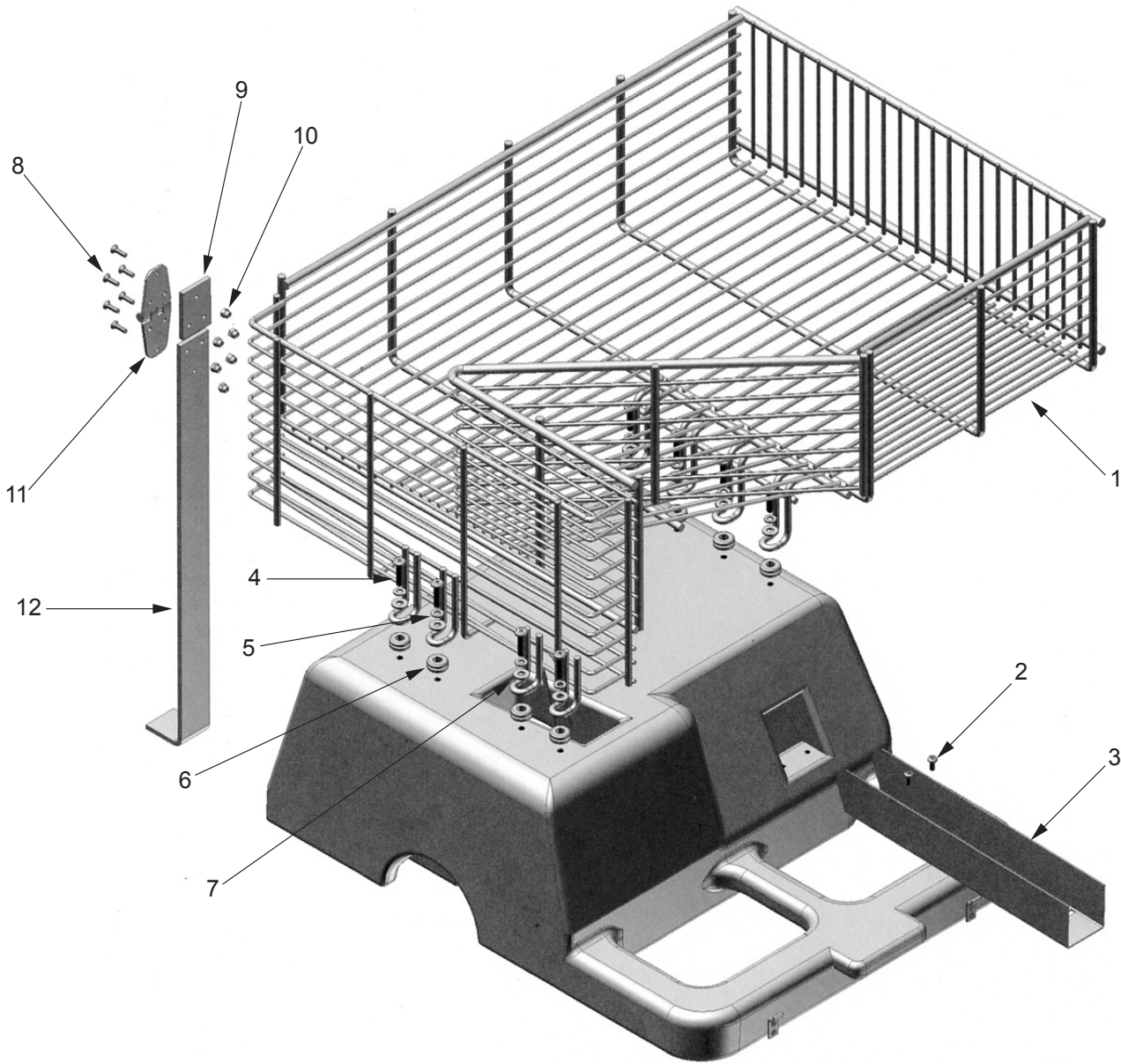
The pillow block bearings are designed for ease in drum removal. To remove drum:

1. Rotate the drum until the coupler set is vertically aligned.
2. Remove the (2) 3/8 (M10) hex head bolts from each pillow block.
3. Pull the drum straight up and out of the lower tank.

- g. Exceptionally dirty or muddy balls should be cycled through the machine twice.
- h. Drain water after each use or when exceptionally dirty.
- i. Do not leave water in the tank. Standing water will accelerate deterioration of rubber cleaning surfaces.
- j. Hose down the inside of the machine after each use to clear the machine of dirt and debris.
- k. The SCRUB-PRO™ has been designed with (2) grease zerks located on the drum pillow blocks (see diagram below for locations).



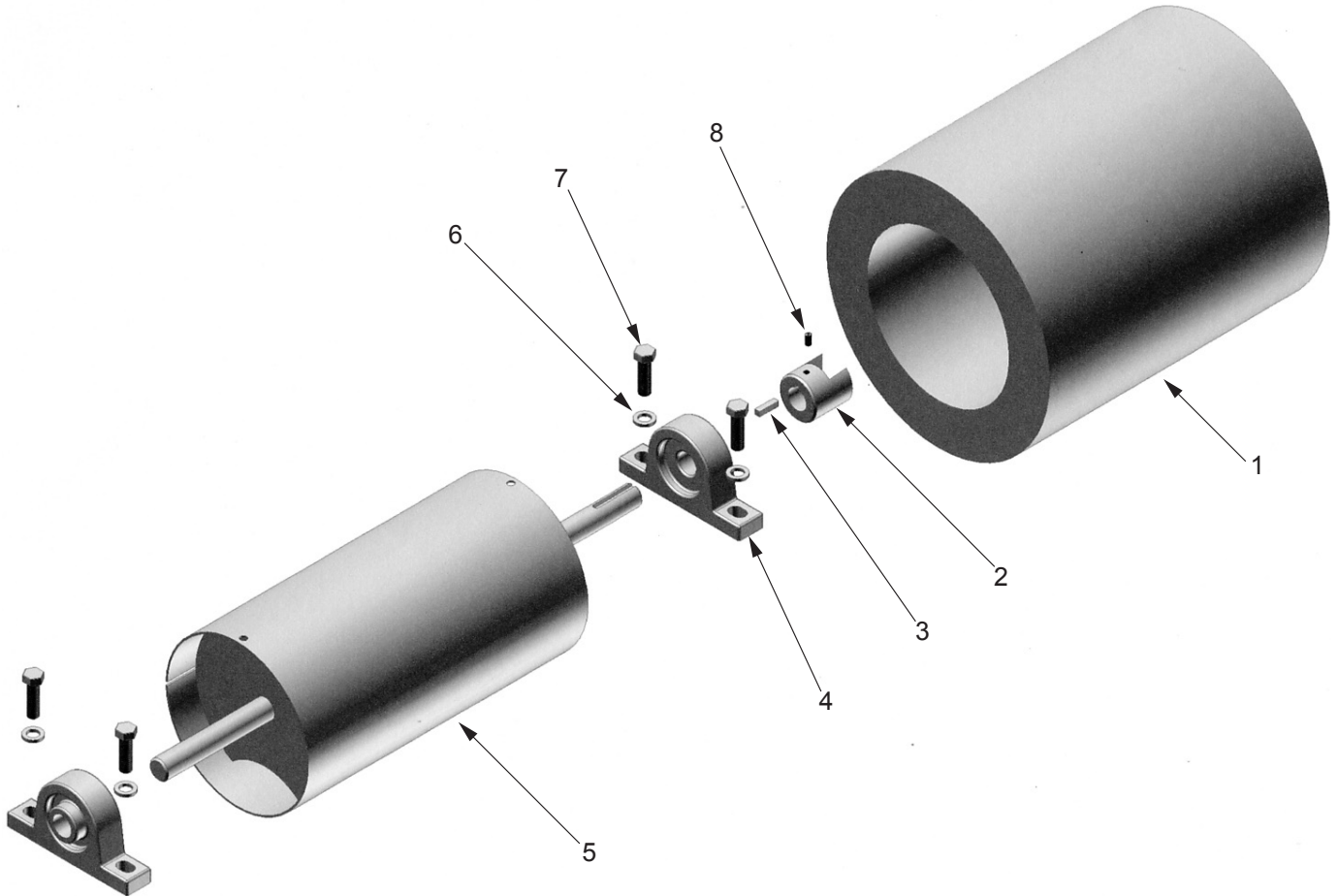
# SCRUB-PRO BASKET & EXIT CHUTE ASSEMBLY



## Key Number / Item Description / Quantity / Part Number

|    |                                                      |   |          |
|----|------------------------------------------------------|---|----------|
| 1  | Basket                                               | 1 | 86500    |
| 2  | #10-24 x .50 Pan Head Phillips (M5-0.8 x 12 mm)      | 2 |          |
| 3  | Exit Chute                                           | 1 | 86406    |
| 4  | 1/4-20 x 1.00 Pan Head Phillips (M6-1.0 x 25 mm)     | 8 |          |
| 5  | .250 Lockwasher (M6)                                 | 8 |          |
| 6  | Rubber Grommet                                       | 8 | 86501    |
| 7  | .250 Flatwasher (M6)                                 | 8 |          |
| 8  | #8-32 x .62 Flat Head Machine Screw (M4-0.7 x 16 mm) | 6 |          |
| 9  | Kick Stand Backing                                   | 1 | 86708    |
| 10 | #8-32 Acorn Nut (M4-0.7)                             | 6 |          |
| 11 | Black Delrin Strap Hinge                             | 1 | 13-01125 |
| 12 | Kick Stand                                           | 1 | 86707    |

# SCRUB-PRO DRUM & PILLOW BLOCK ASSEMBLY

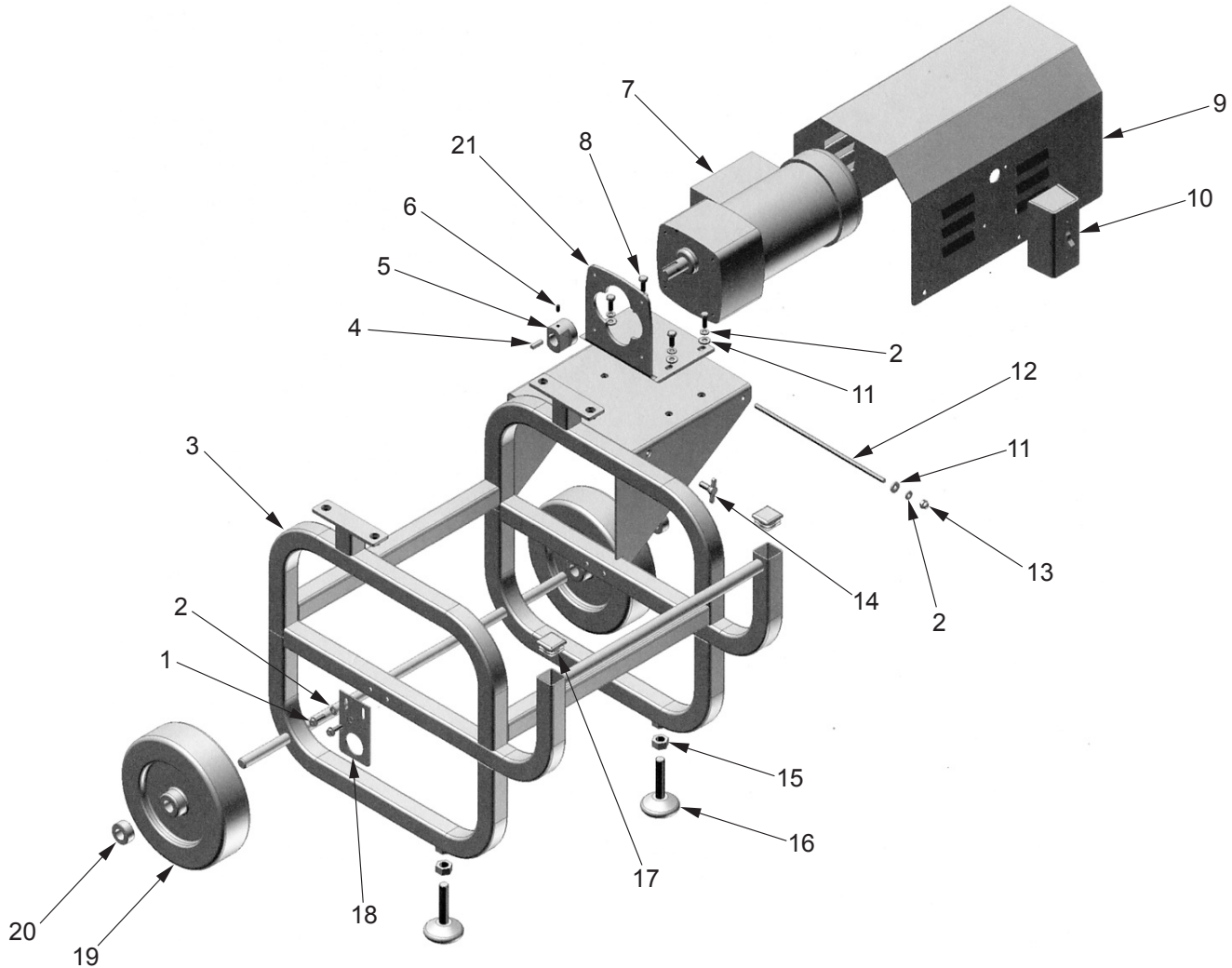


### Key Number / Item Description / Quantity / Part Number

|   |                                                      |   |       |
|---|------------------------------------------------------|---|-------|
| 1 | Coiled Brush                                         | 1 | 86850 |
| 2 | Coupler Set                                          | 1 | 86703 |
| 3 | .1875 SQ. x .75 Key Stock                            | 1 |       |
| 4 | Pillow Block                                         | 2 | 83116 |
| 5 | Drum Weldment                                        | 1 | 86200 |
| 6 | .375 Lockwasher (M10)                                | 4 |       |
| 7 | 3/8-16 x 1.25 Hex Head Bolt (M10-1.50 x 30 mm)       | 4 |       |
| 8 | #10-32 x .38 Hex Socket Setscrew FP (M5-0.8 x 10 mm) | 1 |       |



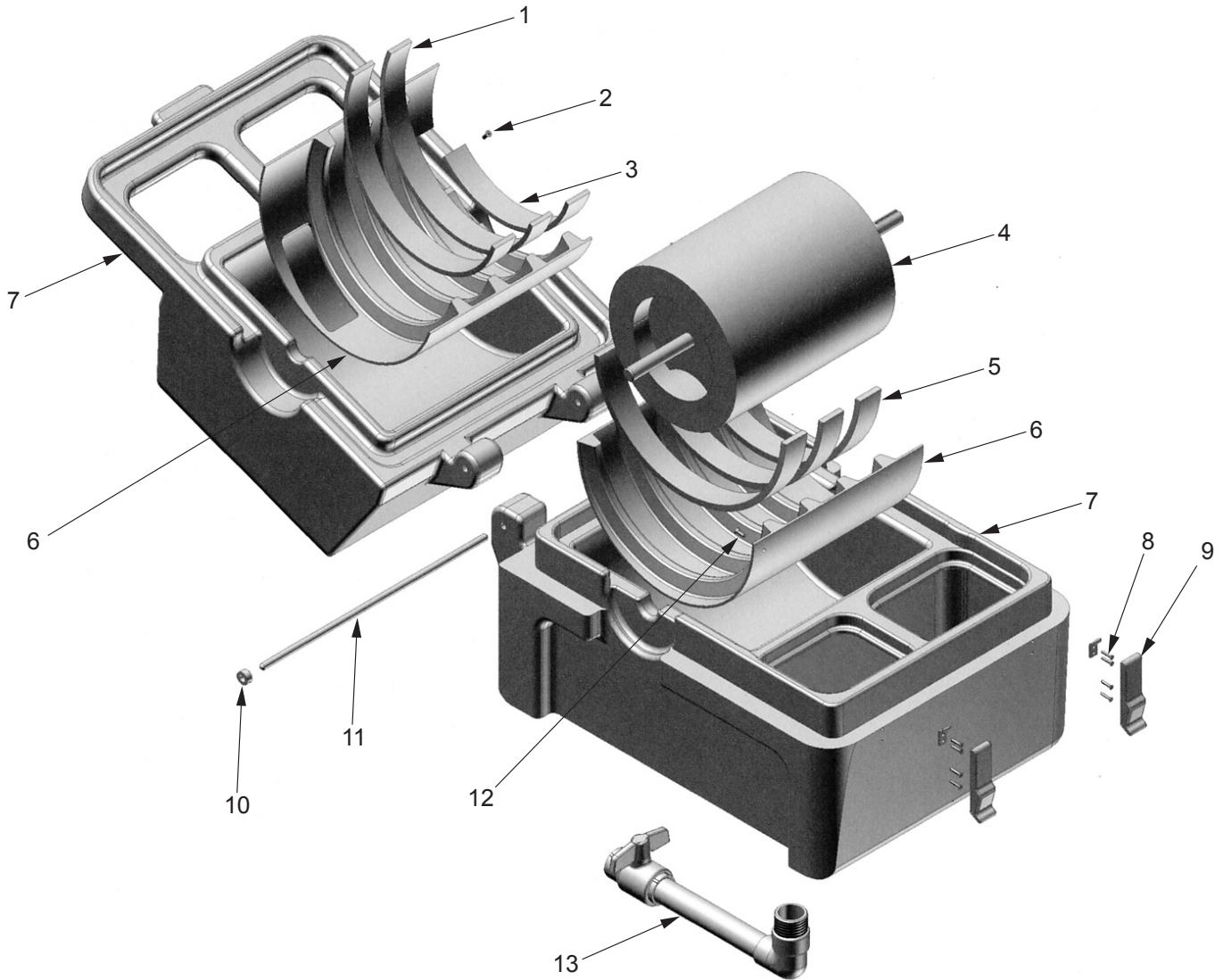
# SCRUB-PRO / EUROPEAN MAIN FRAME & MOTOR ASSEMBLY



## Key Number / Item Description / Quantity / Part Number

|    |                                            |   |       |
|----|--------------------------------------------|---|-------|
| 1  | 1/4-20 x .75 Hex Washer Head Cutting Screw | 2 |       |
| 2  | .250 Lockwasher                            | 8 |       |
| 3  | Main Frame                                 | 1 | 87100 |
| 4  | .1875 SQ. x .75 Key Stock                  | 1 |       |
| 5  | Coupler Set                                | 1 | 86703 |
| 6  | #10-32 x .38 Hex Socket Setscrew FP        | 1 |       |
| 7  | 230v Motor & Power Cord                    | 1 | 87600 |
| 8  | 1/4-20 x .75 Hex Head Bolt                 | 4 |       |
| 9  | Motor Hood Weldment                        | 1 | 87300 |
| 10 | Electrical Switch & Box                    | 1 | 86601 |
| 11 | .250 Flatwasher                            | 6 |       |
| 12 | 1/4-20 Threaded Rod                        | 1 | 86702 |
| 13 | 1/4-20 Acorn Nut                           | 2 |       |
| 14 | Plastic Head Thumb Screw                   | 1 | 86700 |
| 15 | 1/2-13 Hex Nut                             | 2 |       |
| 16 | Leveling Feet                              | 2 | 86701 |
| 17 | End Cap                                    | 2 | 83120 |
| 18 | Drain Holder                               | 1 | 86704 |
| 19 | Wheel                                      | 2 | 86705 |
| 20 | Set Screw Shaft Collar                     | 2 | 86706 |
| 21 | "L" Bracket                                | 1 | 87601 |

# SCRUB-PRO TUB ASSEMBLY



## Key Number / Item Description / Quantity / Part Number

|    |                                                                    |    |       |
|----|--------------------------------------------------------------------|----|-------|
| 1  | Rubber Liner (1.75 x 19.50)                                        | 2  | 86403 |
| 2  | #10 x .63 Flat Head Phillips Sheet Metal Screw<br>(M5-0.8 x 16 mm) | 16 |       |
| 3  | Rubber Liner (1.75 x 12.88)                                        | 1  | 86402 |
| 4  | Drum & Brush Assembly                                              | 1  | 86800 |
| 5  | Rubber Liner (1.75 x 20.38)                                        | 3  | 86404 |
| 6  | Liner/Guide Set (Plastic Guide)                                    | 1  | 86401 |
| 7  | Tub (Top & Bottom)                                                 | 1  | 86400 |
| 8  | #6 x .75 Flat head Phillips Sheet Metal Screw<br>(M3-0.5 x 20 mm)  | 8  |       |
| 9  | Rubber Latch                                                       | 2  | 86405 |
| 10 | .375 Dia. Set Screw Shaft Collar                                   | 4  | 86408 |
| 11 | Pivot Rod                                                          | 1  | 86407 |
| 12 | #10 x .50 Flat head Phillips Machine Screw<br>(M5-0.8 x 12 mm)     | 6  |       |
| 13 | PVC Drain Assembly                                                 | 1  | 86900 |

# SCRUB-PRO ELECTRICAL DIAGRAM

